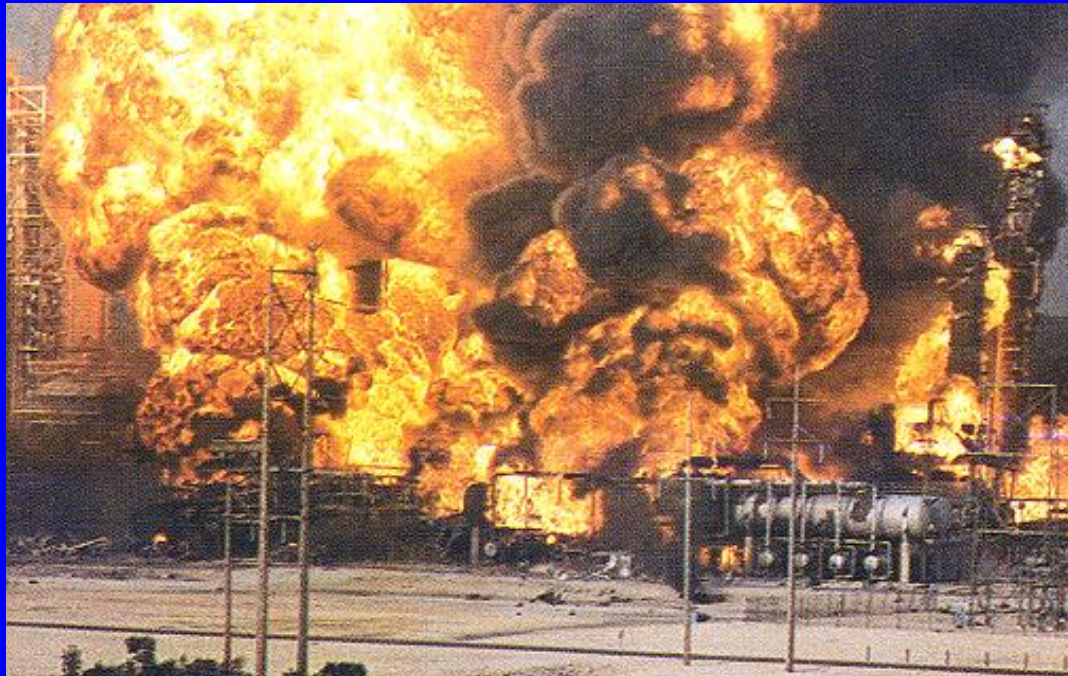


FIRE SAFETY



Introduction

- Fires and explosions kill more than 200 and injure more than 5,000 workers each year
- There is a long and tragic history of workplace fires in this country caused by problems with fire exits and extinguishing systems
- OSHA requires employers to provide proper exits, fire fighting equipment, and employee training to prevent fire deaths and injuries in the workplace



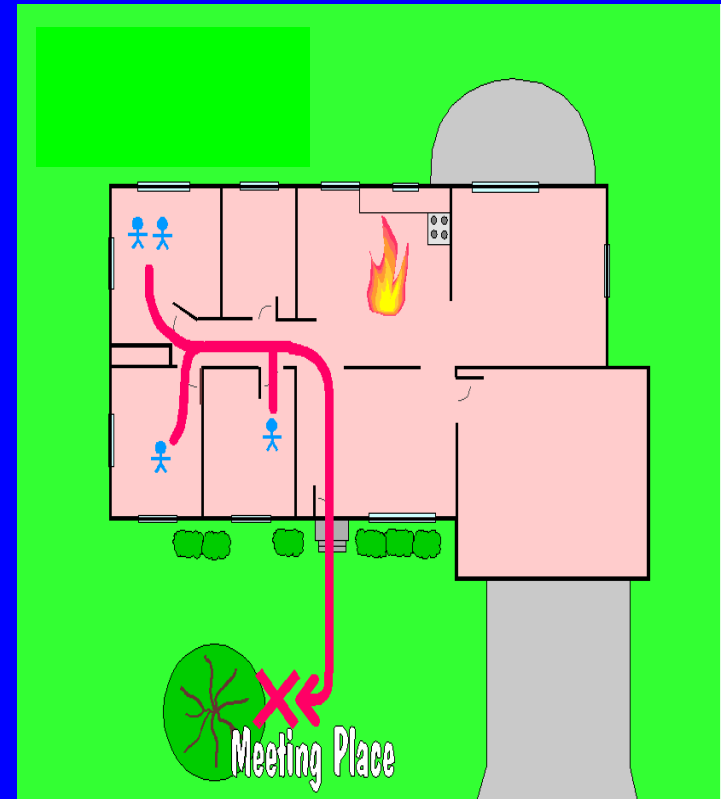
OBJECTIVES

After this awareness training you should be familiar with;

- Exit - Routes, Discharge, Doors, Markings
- Emergency action plan
- Deputy Fire Warden duties
- Fire extinguishers

Exit Route

- A continuous and unobstructed path of exit travel from any point within a workplace to a place of safety (including refuge areas)
- Consists of three parts:
 - Exit access
 - Exit
 - Exit discharge



Exit Routes

Basic Requirements

- Exit routes must be permanent and in sufficient numbers to allow quick escape
- Exits must be separated by fire-resistant materials
- An opening into an exit must be protected by an approved self-closing fire door that remains closed or automatically closes in an emergency





Exit Discharge

- Exits must be large enough to accommodate all building occupants likely to use it.
- Each exit discharge must lead directly:

- Outside
- To a street
- Walkway
- Refuge area
- Public way
- Open space



Exit Doors Must Be Unlocked

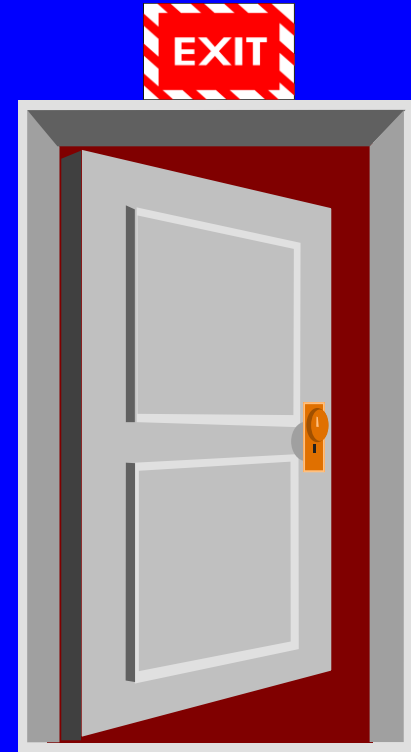
- Must be able to open from the inside during hours of normal operation without keys, tools, or special knowledge
- Device such as a panic bar that locks only from the outside is permitted
- Must be free of any device or alarm that could restrict emergency use if the device or alarm fails



Locked and blocked exit

Exit Doors

- All fire exit doors must be side-hinged doors
- Door must swing in the direction of exit travel if room is designed to be occupied by more than 50 people or contains high hazard contents



Minimize Dangers to Employees

- Exit routes must be free and unobstructed
- Keep exit routes free of explosive or highly flammable materials
- Arrange exit routes so that employees will not have to travel toward a high hazard area, unless it is effectively shielded
- Emergency safeguards (e.g., sprinkler systems, alarm systems, fire doors, exit lighting) must be in proper working order at all times



Obstructed
exit route

Exit Marking

- Each exit must be clearly visible and marked with an “Exit” sign
- Each exit route door must be free of decorations or signs that obscure the visibility of the door



Exit Marking (cont'd)

- If the direction of travel to the exit or exit discharge is not immediately apparent, signs must be posted along the exit access indicating direction to the nearest exit
- The line-of-sight to an exit sign must clearly be visible at all times



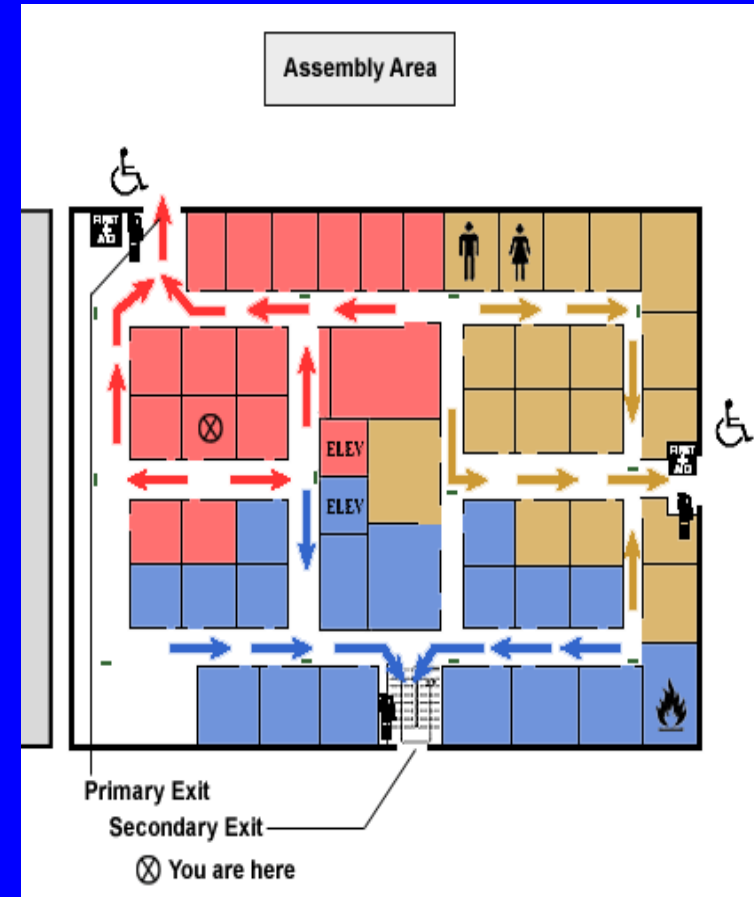
Exit Marking (cont'd)

Each doorway or passage along an exit access that could be mistaken for an exit must be marked “Not an Exit” or similar designation, or be identified by a sign indicating its actual use (e.g., closet).



Emergency Action Plan

- Describes actions that must be taken to ensure employee safety in emergencies
- Includes floor plans or maps which show emergency escape routes
- Dictates employees actions to take in emergency situations
- Should cover most emergencies, such as fires, explosions, toxic chemical releases, hurricanes, tornadoes, blizzards, and floods



Deputy Fire Warden Duties (DFW)

1. In accordance with the base order 11320.1L, all buildings are required to have an appointed and trained Deputy Fire Warden
2. A letter of appointment should be on file with the fire and emergency services.

DFW cont.

- 1. Conduct and annotate inspections of workplace**
- 2. Conduct and annotate inspections of fire extinguishers monthly**
- 3. Verify fire bills are accurate and posted near phones**
- 4. Create and/or update and post evacuation plans**
- 5. Plan, coordinate annual fire drills**

DFW cont.

- 6. Maintain records of inspections conducted by MCB fire inspectors**
- 7. Initiate/Mitigate hazards detected during fire inspections**
- 8. Schedule newly appointed Deputy Fire Wardens for class by calling MCCS Safety at 451-5077 x 23. Once there are 12 or more employees on a roster we will contact MCB fire protection to set up a class**

DFW cont.

Post - Fire Bill

- A fire Bill must be posted in every facility for all employees to see and must have the fire emergency number to call in the event of a fire.

DFW cont.

Fire Bill

BO 11320.1L

JUN 1 2 2006

FIRE BILL

BUILDING NO. _____

IN CASE OF FIRE

1. USE NEAREST FIRE ALARM BOX
OR TELEPHONE EXT. 911

Know the location of the nearest alarm box and the nearest telephone in your area. When using telephone, REPORT BUILDING NUMBER. Upon arrival direct Fire Department to the scene of fire.

2. SPREAD THE ALARM—PASS THE WORD.
All personnel except fire parties clear the area.
3. IF TIME PERMITS, CLOSE DOORS AND WINDOWS TO CONFINE THE FIRE AND PREVENT DRAFTS. DO NOT ENDANGER YOURSELF OR OTHERS IN THIS EFFORT.
4. USE PROPER EQUIPMENT AT HAND TO EXTINGUISH THE FIRE, PENDING ARRIVAL OF THE FIRE DEPARTMENT.

Fire Extinguishers

If portable fire extinguishers are provided for employee use, the employer must mount, locate and identify them so workers can access them without subjecting themselves to possible injury.



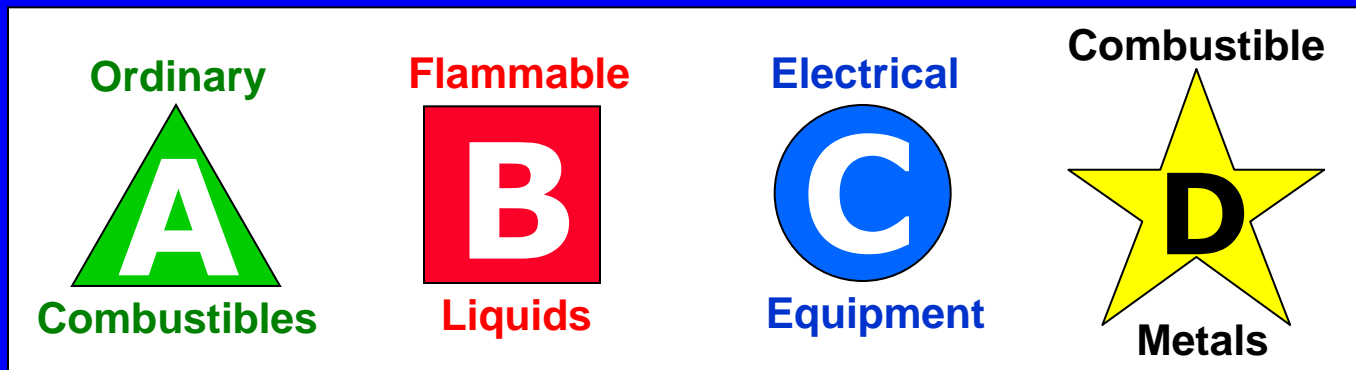
Blocked extinguisher

Fire Extinguishers cont.

Classification

Letter classification given an extinguisher to designate the class or classes of fire on which it will be effective.

- **Class A** – Ordinary combustibles (wood, cloth, paper)
- **Class B** – Flammable liquids, gases, greases
- **Class C** – Energized electrical equipment
- **Class D** – Combustible metals



Fire Extinguishers cont.

Maintaining

- Must maintain in a fully charged and operable condition
- Must keep in their designated places at all times except during use
- Must conduct an monthly (30 day) inspection and document on inspection card/tag





Summary



- There must be enough exits in the proper arrangement for quick escape
- Exit routes must be marked, lighted, free of obstructions, and locks must not be used to impede or prevent escape
- An emergency action plan and a fire prevention plan must be in place
- Fire extinguisher classes and numerical ratings help a user understand its capabilities
- Fire extinguishers must be inspected, maintained and employees (Fire wardens) must be trained in how to use them